



Redress Manager SQL Server Upgrade

Providing the chance for you to understand the latest changes and ask questions about difficult case scenarios

Improve performance

Improve security

Reduce network traffic

Reduce the chance of a database corruption

Redress Manager comes as standard with Microsoft Access™ databases (stores cases in here). This works well in a local environment with small case volumes and a small amount of users.

For larger sites and for those companies with multiple locations, we recommend upgrading to Microsoft SQL Server™.

What is Microsoft SQL Server™

Microsoft SQL Server™ is what is called a 'Client Server' database. In simple terms it sits on a Server (Powerful PC) and handles requests for information. A client (PC) asks the server for information and it works out what information is needed and returns the answer.

Example (*Basic illustration*)

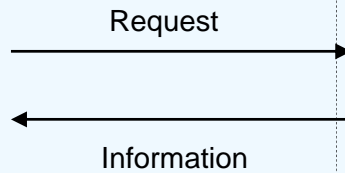
Client to Server: Give me case 17001511

Server: Processes case information to find case 17001511

Server to Client: Here is case 17001511

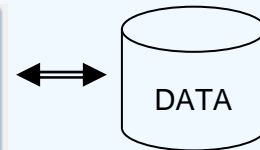
All the information (processing) is carried out on the server and the answer is passed to the client (PC). Using Access all the processing is carried out on each client and the amount of information passing between the client and server is significantly increased with any network glitch potentially causing a database corruption.

MS SQL Server



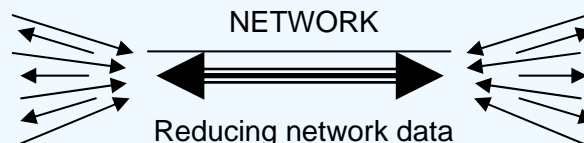
Small amounts of data

SQL Server



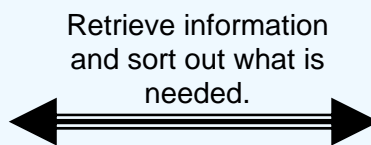
Work out information to return (local)

Overall improvement through network traffic reduction, PC doing less work. Less chance of data corruption due to a PC or network failure.



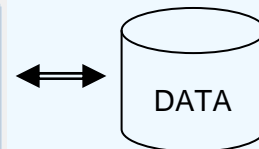
Reducing network data is crucial and by using a local data source data loss is minimised.

MS Access



Large amounts of data

Server



DATA

What is the upgrade process?

A representative from Exasoft will liaise with your IT department and organise an upgrade plan. We do have available a document detailing the upgrade process for your perusal. We copy all your existing information into SQL Server from either one or two sites.

Most companies prefer to have their upgrade done on a weekend due to workloads and we can accommodate this.

Differences when using Redress Manager

When using Redress Manager you should see no differences in the application other than the removal of the Archiving options and an improvement in performance.

The cost of upgrading

When you purchase an upgrade to Microsoft SQL Server you are not only paying for the upgrade itself but also the right to use Redress Manager on SQL Server.

The upgrade is dependant on you having appropriate MS SQL Server 2000 / 2005 / 2008 licenses (we can assist with this).